

Scope the project at design with documentation of decisions

Presented by:

Tom Nickel, DeIDOT ADA Title II/Section 504 Coordinator

thomas.nickel@delaware.gov

DOT.ADASupport@delaware.gov

Civil Rights



Delaware Department
of Transportation

Limited time as ADA Coordinator

- ADA Self Assessment / ADA Inventory
- ADA Title II Subrecipient
- Project Scope
- ADA Section Involvement in Project Acceptance

ADA Self-Assessment and ADA Inventory

- 2011/2012 collection
- Limited specific data
- Current updates
- Inventory used as data for decisions
- Take credit for improvements as part of Transition Plan requirements



Transition Plan - Inventory

APPENDIX N Update – 2016 Pedestrian Facility Evaluation Summary

NEW CASTLE						
	Category	Total Assessed	Total Non-Compliant	Total Compliant	% Non-Compliant	% Compliant
	Bus Stops Patron Pads	1,038	737	301	71%	29%
	Curb Barriers	462	462	0	100%	0%
	Curb Ramps	4,350	2,278	2,072	52%	48%
	Vertical Elevation Difference > 1/2 inch	80				
	Driveway Crossings	1,486	894	592	60%	40%
	Driveway Crossing Along Non-Compliant Sidewalk	2,011	2,011		100%	0%

ADA Title II Subrecipient

- Public entity (local agency) receiving funds, programs, projects, or assistance
- DeIDOT obligations
- Subrecipient obligations
- Developing a program to ensure DeIDOT can continue to support subrecipients

Project Scope

Why is Project Scope considered

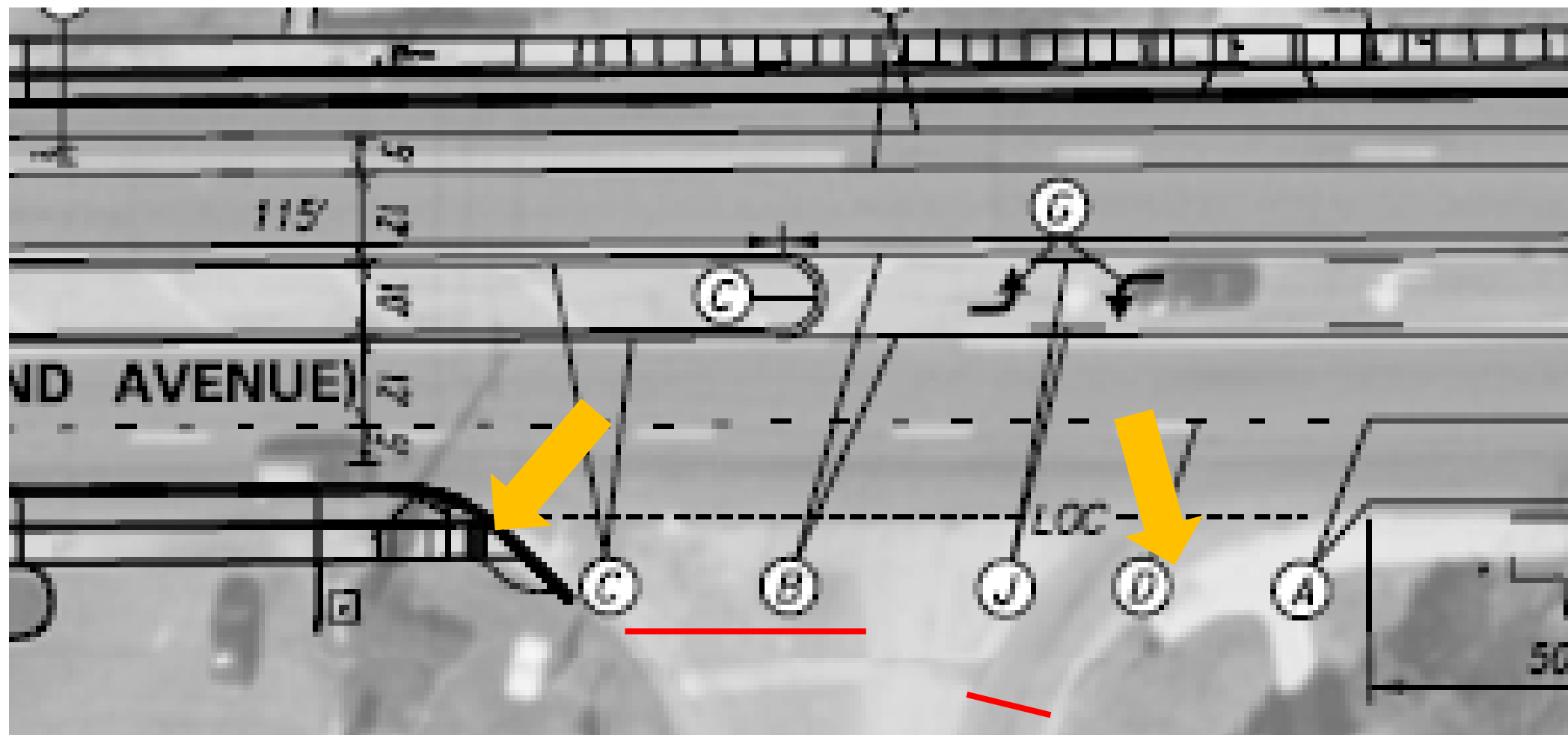
- relative to the primary intent of project (design/construction)
- relative to impacts on the pedestrian network

Project Scope cannot be intentionally meandered

- to avoid or skip over pedestrian facilities that are within the logical limits
- must not result in an unmitigated negative impact to existing pedestrian accessibility



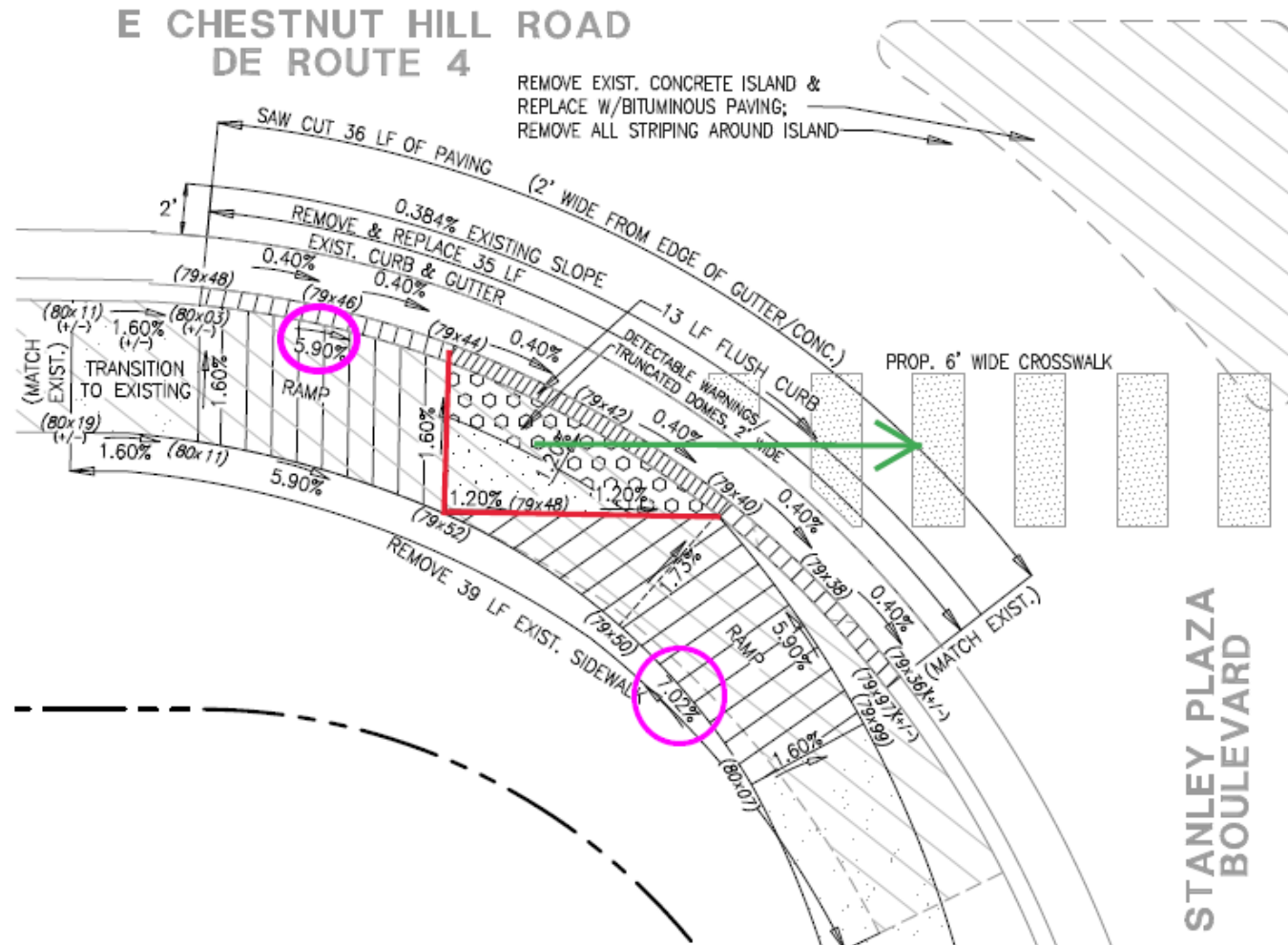
Scoping or Construction





Scoping or Construction

Scoping



- ADA requires grade breaks perpendicular to the path of travel.

ADA Section – Project Acceptance

- Taking new responsibilities with project ADA resolution and acceptance

64	130	0.8	0.1	1.2	2.5	3.7	25	60	5.3	0.3	1.2	1.6	1.3	N/A	Sump	60	0	0	No	No	N/A	N/A
Verify Drainage Conditions																						

Why is this important?

- Decisions made during scope affect ADA outcome
 - Good scoping and documentation leads to good outcome
 - Good scoping and poor documentation leads to questionable outcome
 - Poor scoping and poor documentation leads to unexpected outcome
- Accurate and updated ADA Inventory
 - Helps with project scoping and decisions
 - Helps with ADA Transition Plan progress reporting

General ADA Questions or Inquiries

- DOT.ADASupport@delaware.gov
- thomas.nickel@delaware.gov
- 302-760-2048